



Giesecke+Devrient



Compass Transport

Command cash logistics based on best practices

Transport cash to the right place at the right time securely with Compass Transport. With more than twenty years of industry experience, this advanced solution ensures the fluid management of end-to-end logistics for Cash-in-Transit companies.



Track orders to ensure consistency

Compass Transport enables complete visibility of route operations from start to finish. CiT operators and clients connect nearly minute to minute with progress updates along the route, ensuring the fulfillment of service-level agreements.



Ensure great service with flexibility

Make changes easily, such as package rerouting and on-the-go route changes. Compass Transport offers the flexibility to adjust for repacks, recollects, split routes, and adapts to other exceptions effortlessly, optimizing costs and ensuring consistent service.



Trust in the highest security standards

This solution maintains the optimal security standards, recording the movement, location, and transfer of liability of packages and items from the beginning to completion of a route. Every action is recorded, therefore mitigating risk and discrepancies.

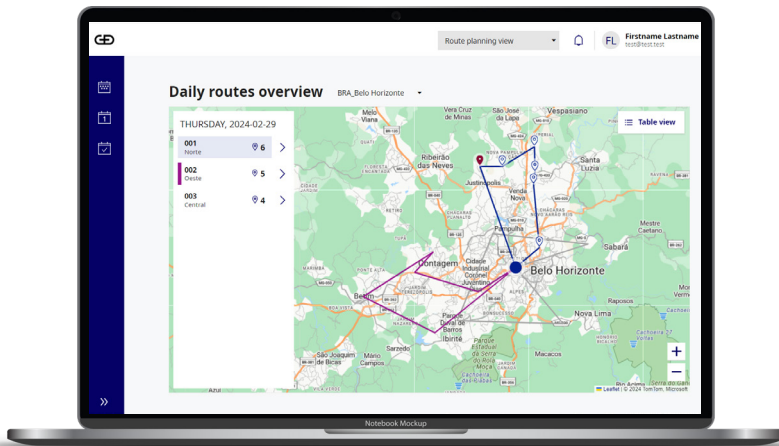


Save valuable time with the Android App

Make cash deliveries, cash collections, and perform replenishment and maintenance work on the go with Compass Transport's Android App. Speed up Secure operations with digital workflows and digital signatures, while NFC verification geo-fencing, and ATM e-lock integration further boost security.

Compass Transport at a Glance

Modern, web-based technology makes software easy to use with minimal training effort and ensures your system is easy to maintain.



Collaborate efficiently with supply chain partners, enabling transparency and expertly managing service-level agreements. Reduce operational costs and enhance reliability with sophisticated route planning and stock management, end-to-end package tracking, and automated transport services.



How does it work?

- » **Automated planning:** Auto-plan routes based on master routes, assign assets, and conveniently communicate changes on the go for optimal services and adaptability.
- » **Track and Trace:** Gain a clear overview of all orders and packages to see which services have been executed with Track and Trace technology.
- » **Real-time visibility:** Logging assets and activities enables the full traceability of valuables, assets, and services for operational efficiency and security.
- » **Simple integration:** Integrate seamlessly with electronic locks, route optimization systems, and cash center systems for operational gains.
- » **Role-based workflows:** Dedicated and focused user guidance eases move this remaining part to the bottom of the left column.



Find more information on our website:
www.gj-de.com

Giesecke+Devrient GmbH
Prinzregentenstrasse 161, P.O. Box 80 07 29,
81607 Munich, Germany
Phone: +49 (0) 89 41190, Web: www.gj-de.com

© Giesecke+Devrient, 2023
All technical data subject to change